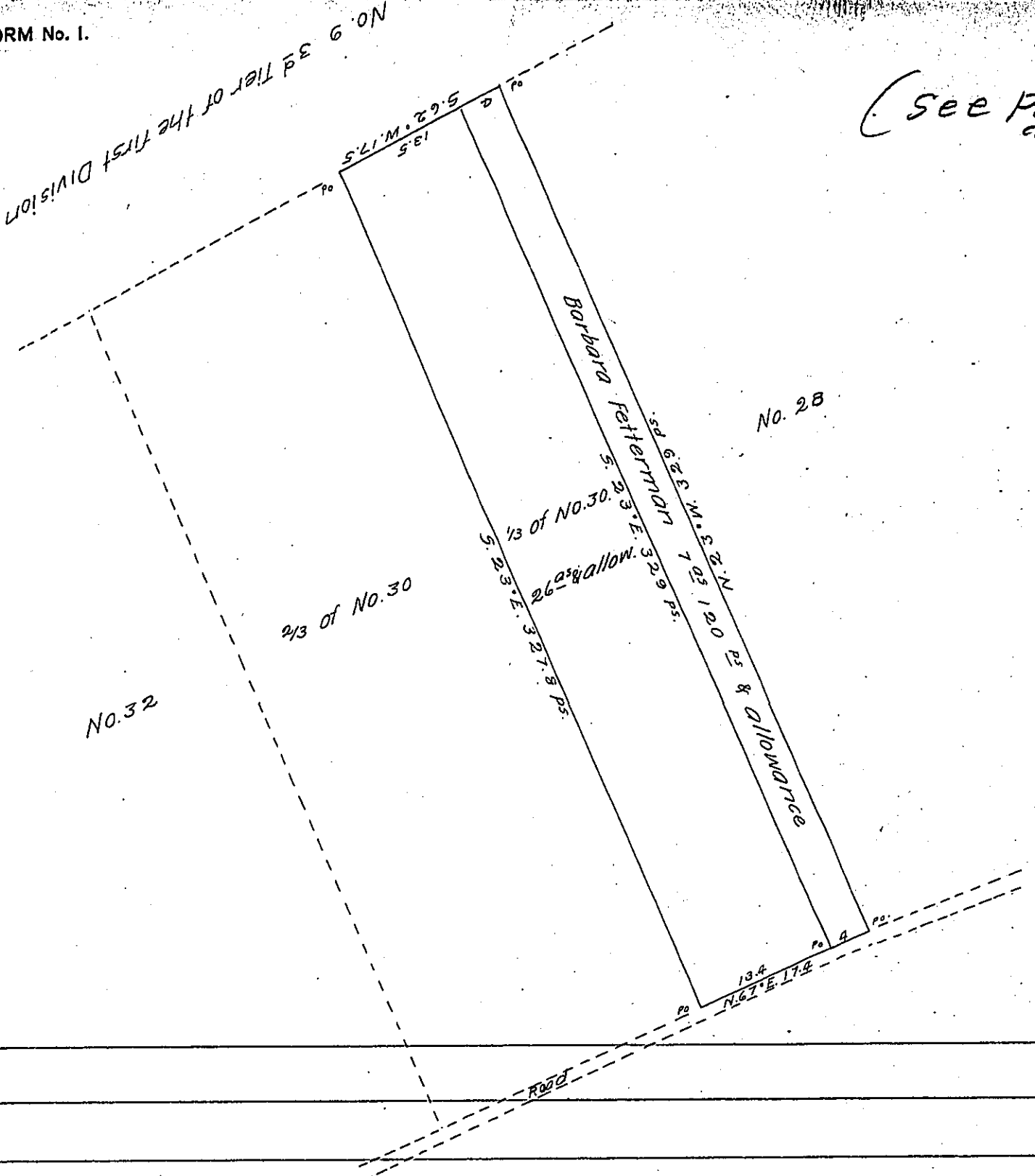


(see Pg. 44)



A Connected Draft of two tracts of Land situate in the second Division of Certified ~~Harver~~ Newport township Luzerne County. One Containing 7⁹⁵ 12.0^{PS} & allowance Surveyed August 17th 18.54 by virtue of a Warrant issued to Barbara Fetterman dated August 8th 18.54 the other Containing twenty six acres & allowance; being one third part of the whole of Lot No. 30. Containing 77⁹⁵ 47^{PS} &c. Resurveyed September 10th 1802 and Certified to Henry Wilson

Surveyed the above described tracts August 17th 18.54

Henry Colt D.S.
of Luzerne County

IN TESTIMONY that the above is a copy of the original remaining on file in the Department of Internal Affairs of Pennsylvania, made conformably to an Act of Assembly approved the 16th day of February, 1833, I have hereunto set my Hand and caused the Seal of said Department to be affixed at Harrisburg, this second day of February 1905

Joseph P. ...
Secretary of Internal Affairs.